

Datasheet

Realise Server

Supported Platforms

- Microsoft® Windows Server® 2003 with Service Pack 2
- Microsoft Windows Vista® Enterprise
- Microsoft Windows XP® Professional with Service Pack 2
- Microsoft Windows® 2000 with Service Pack 4

Minimum System Requirements

- Intel® Pentium® III or equivalent processor
- 256 MB RAM
- CD-ROM for software installation
- Windows 2000 (SP4)
- 110 MB of available hard-disk space

Internet/Intranet Based

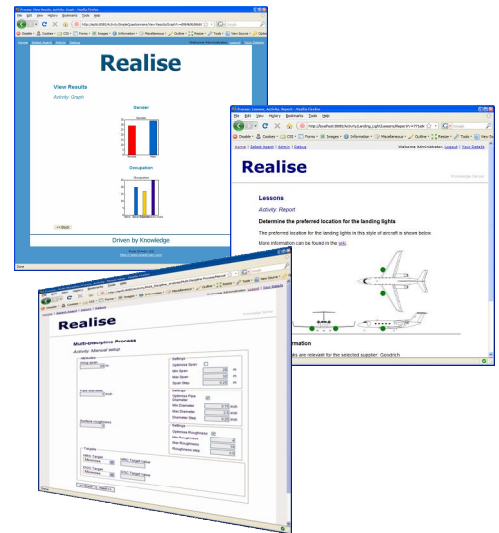
- Browser-based software
 - Tested on Internet Explorer® 6 & 7 and Firefox 2
- Web-based administration
- Distributed execution

Open and Customisable

- Built on proven open-source technologies
- All of the source code is provided and can be customised to your needs
- Modify the look-and-feel of the site through customisable templates
 - Templates can be customised for the entire site or for an individual activity

Security

- Secure access control



Typical uses

- Decision support systems
- Knowledge-based advisors
- Process automation
- On-line surveys
- Health and safety advisors and questionnaires

Key benefits and features

- Powerful, web-based advisors and automated assistants
- Rich visualisation
- “What-if?” decision assistance